



# EMPIRE SQUARE

EMPIRE  
SQUARE  
إمباير سكوير

Your home search  
ends now

البحث عن منزلك ينتهي  
الآن





# ZONE OVERVIEW

## نظرة عامة على المنطقة

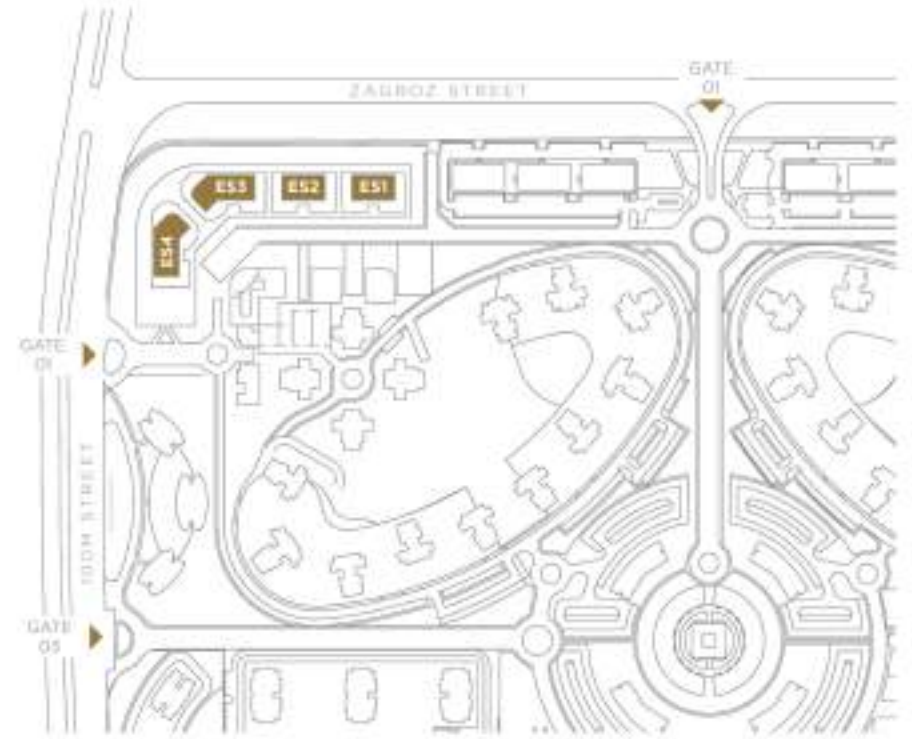
The Empire Square project is located in the north-west of the Empire project. A total of 720 apartments are spread over 4 buildings. The total project area is 168,497 m<sup>2</sup> and includes both residential and commercial buildings.

### The apartments are divided into the following:

- 1-bedroom: 40 apartments with an area of (131) m<sup>2</sup>.
- 2-bedroom: 600 apartments with areas ranging from (143-178) m<sup>2</sup>.
- 4-bedroom: 80 apartments with areas ranging from (212-217) m<sup>2</sup>.

### Empire Square net to gross percentage:

- The common area percentage for ES1, ES2 is: 15.8%
- The common area percentage for ES3, ES4 is: 15.1%



يقع مشروع إمبراير سكوير في الشمال الغربي من مشروع إمبراير إجمالي 720 شقة موزعة على 4 مباني. تبلغ مساحة المشروع الإجمالية 168,497 متر مربع وتشمل المباني السكنية والتجارية.

### وتنقسم الشقق السكنية إلى:

- غرفة نوم واحدة، 40 شقة بمساحة (131) م<sup>2</sup>.
- غرفتين نوم، 600 شقة بمساحات تبدأ من (143-178) م<sup>2</sup>.
- أربع غرف نوم، 80 شقة بمساحات تبدأ من (212-217) م<sup>2</sup>.

### النسبة الصافية إلى الإجمالية في مشروع امباير سكوير:

- نسبة المساحة المشتركة لـ ES1 و ES2 هي: 15.8%
- نسبة المساحة المشتركة لـ ES3 و ES4 هي: 15.1%



# INTERIOR DESIGNS

## التصاميم الداخلية

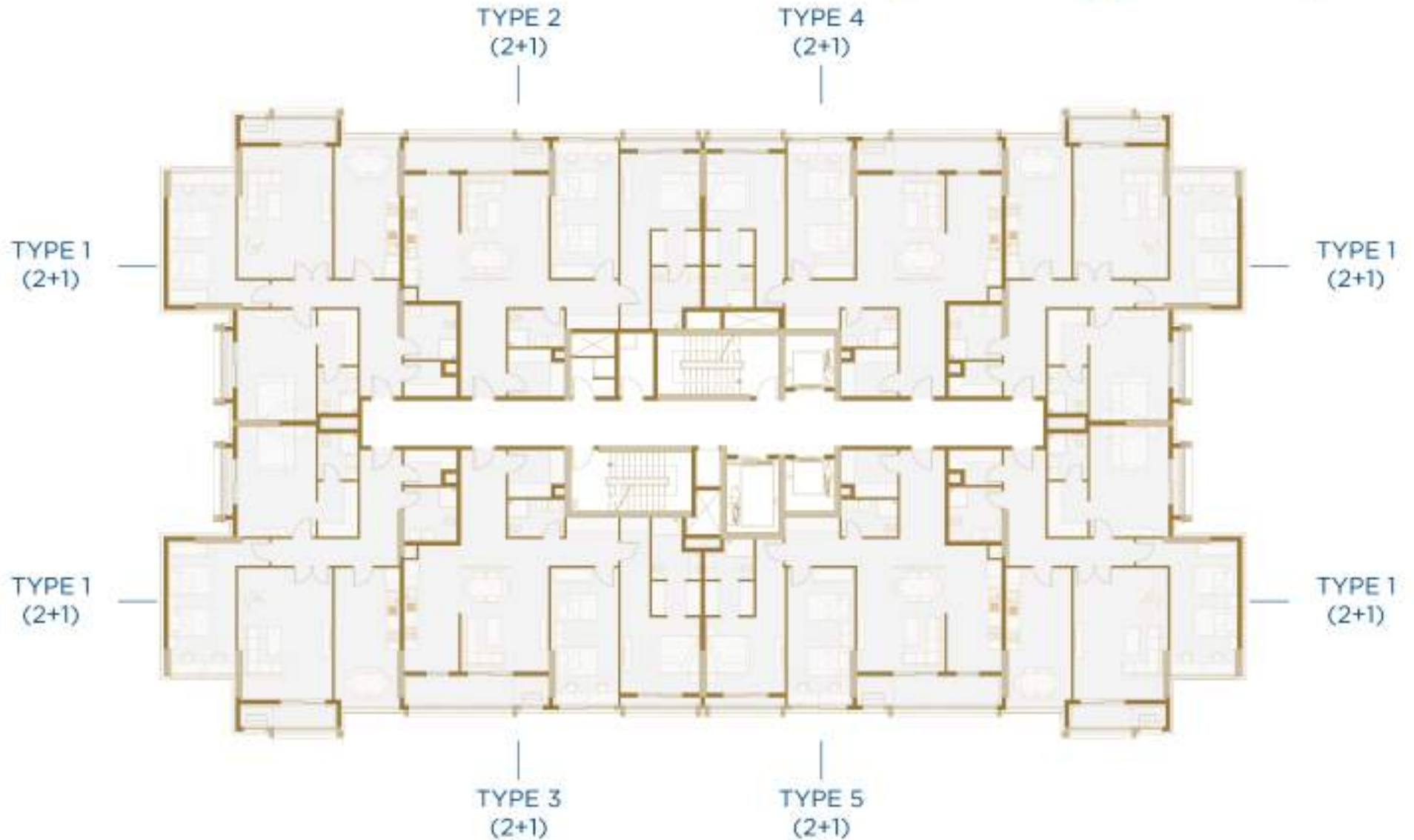


A home designed  
with love



منزل مصمم  
بالحب

ES1 ES2







## ES1 ES2 TYPE 1 (2+1)

#	Space	Area (m <sup>2</sup> )
01	Entrance	7.10
02	Cloak Room	3.12
03	Bathroom	5.61
04	Corridor	6.72
05	Kitchen	17.93
06	Living Room	24.13
07	Balcony	2.63
08	Bedroom	19.44
09	Master Bedroom	17.14
10	Dressing Room	4.32
11	Bathroom	3.61
12	Air Con	1.35
13	F. Balcony	1.05

GROSS AREA  
150.71 m<sup>2</sup>

NET AREA  
130.13 m<sup>2</sup>





ES1 ES2 TYPE 2 (2+1)

#	Space	Area (m <sup>2</sup> )
01	Entrance	13.53
02	Cloak Room	4.88
03	Bathroom	4.12
04	Corridor	4.94
05	Living + Kitchen	32.25
06	Balcony	6.00
07	Bedroom	17.81
08	Master Bedroom	17.54
09	Dressing Room	3.26
10	Bathroom	5.17
11	Air Con	1.93
12	F. Balcony	1.25

GROSS AREA <b>146.11 m<sup>2</sup></b>	NET AREA <b>126.16 m<sup>2</sup></b>
---	---





### ES1 ES2 TYPE 3 (2+1)

#	Space	Area (m <sup>2</sup> )
01	Entrance	12.57
02	Cloak Room	4.88
03	Bathroom	4.12
04	Corridor	5.90
05	Living + Kitchen	32.25
06	Balcony	6.00
07	Bedroom	17.81
08	Master Bedroom	17.54
09	Dressing Room	3.26
10	Bathroom	4.67
11	Air Con	1.93
12	F. Balcony	1.25

GROSS AREA  
146.40 m<sup>2</sup>

NET AREA  
126.41 m<sup>2</sup>





ES1 ES2 TYPE 4 (2+1)

#	Space	Area (m <sup>2</sup> )
01	Entrance	13.53
02	Cloak Room	4.88
03	Bathroom	4.12
04	Corridor	5.15
05	Living + Kitchen	32.25
06	Balcony	6.00
07	Bedroom	17.81
08	Master Bedroom	16.16
09	Dressing Room	3.26
10	Bathroom	3.91
11	Air Con	1.93
12	F. Balcony	1.25

GROSS AREA 143.27 m<sup>2</sup> NET AREA 123.71 m<sup>2</sup>





## ES1 ES2 TYPE 5 (2+1)

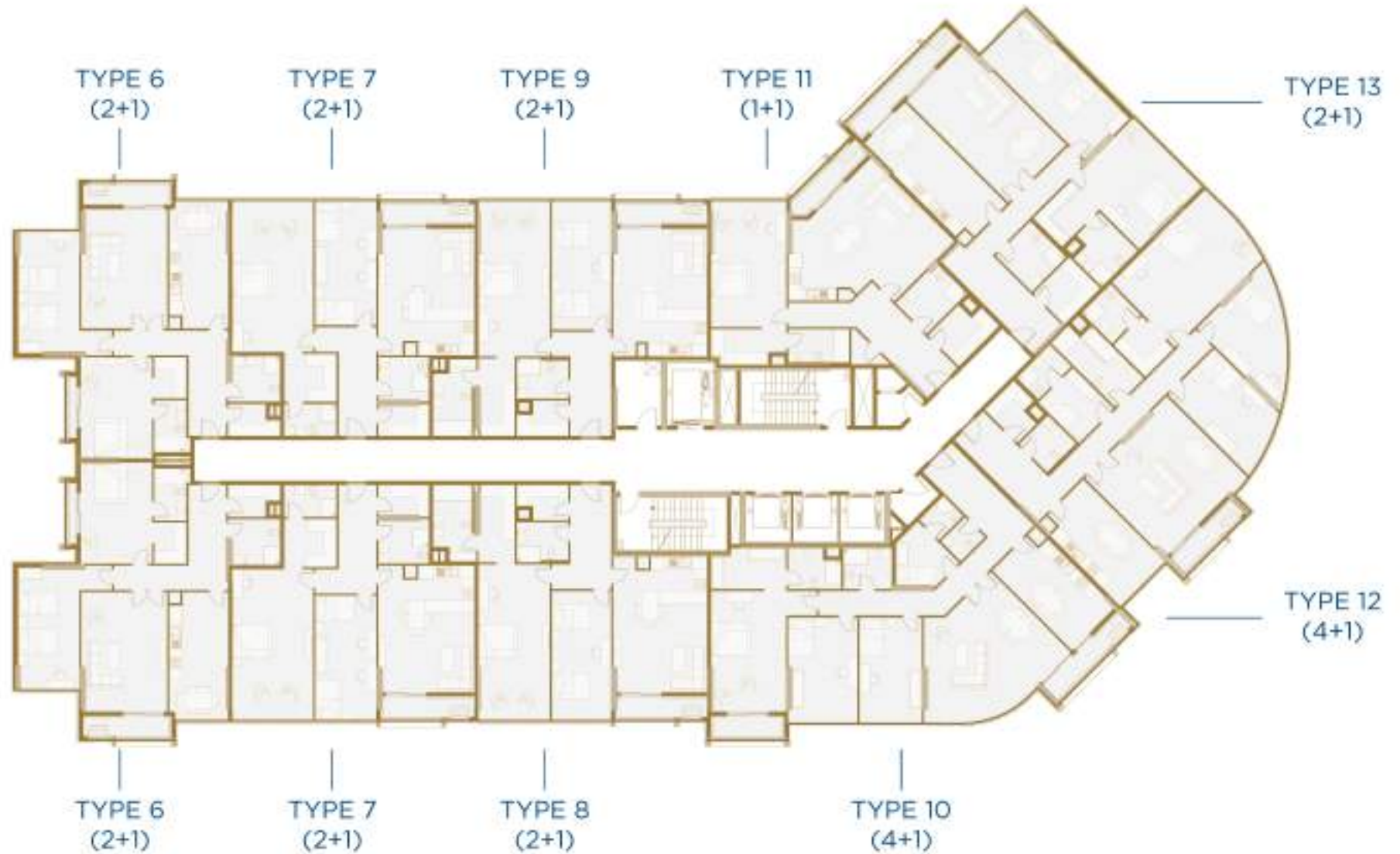
#	Space	Area (m <sup>2</sup> )
01	Entrance	12.57
02	Cloak Room	4.88
03	Bathroom	4.12
04	Corridor	6.11
05	Living + Kitchen	32.25
06	Balcony	6.00
07	Bedroom	17.81
08	Master Bedroom	16.16
09	Dressing Room	3.26
10	Bathroom	3.40
11	Air Con	1.93
12	F. Balcony	1.25

GROSS AREA  
143.30 m<sup>2</sup>

NET AREA  
123.73 m<sup>2</sup>



ES3



# ES4





**ES3 ES4** TYPE 6 (2+1)

#	Space	Area (m <sup>2</sup> )
01	Entrance	7.07
02	Bathroom	5.46
03	Cloak Room	3.43
04	Corridor	6.88
05	Master Bedroom	17.22
06	Dressing Room	3.17
07	Bathroom	3.93
08	Bedroom	19.55
09	Living Room	24.13
10	Balcony	2.53
11	Air Con	1.44
12	Kitchen	17.92
12	F. Balcony	1.05

GROSS AREA  
**148.86 m<sup>2</sup>**

NET AREA  
**129.35 m<sup>2</sup>**





### ES3 ES4 TYPE 7 (2+1)

#	Space	Area (m <sup>2</sup> )
01	Entrance	7.64
02	Bathroom	5.20
03	Cloak Room	3.70
04	Corridor	3.60
05	Master Bedroom	29.37
06	Dressing Room	6.03
07	Bathroom	4.03
08	Bedroom	18.38
09	Living + Kitchen	28.90
10	Balcony	2.81
11	Air Con	1.44

GROSS AREA  
140.08 m<sup>2</sup>

NET AREA  
121.72 m<sup>2</sup>





ES3 ES4 TYPE 8 (2+1)

#	Space	Area (m <sup>2</sup> )
01	Entrance	6.80
02	Cloak Room	3.82
03	Bathroom	4.81
04	Corridor	3.48
05	Master Bedroom	26.57
06	Dressing Room	6.53
07	Bathroom	6.38
08	Bedroom	18.42
09	Living + Kitchen	30.31
10	Balcony	2.81
11	Air Con	1.35

GROSS AREA  
143.95 m<sup>2</sup>

NET AREA  
125.09 m<sup>2</sup>



### ES3 ES4 TYPE 9 (2+1)

#	Space	Area (m <sup>2</sup> )
01	Entrance	7.80
02	Cloak Room	3.82
03	Bathroom	4.81
04	Corridor	3.48
05	Master Bedroom	26.57
06	Dressing Room	6.53
07	Bathroom	6.38
08	Bedroom	18.42
09	Living + Kitchen	28.47
10	Balcony	2.81
11	Air Con	1.35

GROSS AREA  
141.51 m<sup>2</sup>

NET AREA  
122.97 m<sup>2</sup>





**ES3 ES4** TYPE 10 (4+1)



GROSS AREA  
**212.05 m<sup>2</sup>**

NET AREA  
**184.26 m<sup>2</sup>**

#	Space	Area (m <sup>2</sup> )
01	Entrance	9.06
02	Bathroom	2.34
03	Corridor	14.26
04	Kitchen	16.54
05	Living Room	34.11
06	Balcony	3.47
07	Air Con	1.44
08	Bedroom	15.84
09	Bedroom	17.24
10	Master Bedroom	23.27
11	Balcony	3.24
12	Dressing Room	6.95
13	Bathroom	4.67
14	Bathroom	4.74
15	Maid Room	6.45
16	Bathroom	2.34



### ES3 ES4 TYPE 11 (1+1)

#	Space	Area (m <sup>2</sup> )
01	Entrance	8.98
02	Bathroom	5.90
03	Cloak Room	5.38
04	Corridor	6.75
05	Master Bedroom	22.72
06	Dressing Room	5.61
07	Bathroom	4.82
08	Storage	17.07
09	Living + Kitchen	35.27
10	Balcony	2.75
11	Air Con	1.48

GROSS AREA  
130.88 m<sup>2</sup>

NET AREA  
113.73 m<sup>2</sup>





**ES3 ES4** TYPE 12 (4+1)



GROSS AREA  
**217.15 m<sup>2</sup>**

NET AREA  
**188.69 m<sup>2</sup>**

#	Space	Area (m <sup>2</sup> )
01	Entrance	9.06
02	Cloak Room	3.97
03	Bathroom	3.91
04	Bathroom	3.45
05	Maid Room	6.79
06	Bathroom	8.21
07	Master Bedroom	28.56
08	Dressing Room	4.35
09	Bathroom	4.20
10	Bedroom	16.36
11	Bedroom	16.64
12	Living Room	31.03
13	Balcony	2.26
14	Air Con	1.44
15	Kitchen	17.71
16	Corridor	14.49



### ES3 ES4 TYPE 13 (2+1)

#	Space	Area (m <sup>2</sup> )
01	Entrance	9.49
02	Bathroom	5.99
03	Cloak Room	5.36
04	Corridor	10.45
05	Kitchen	20.27
06	Living Room	27.96
07	Balcony	5.15
08	Air Con	1.35
09	Bedroom	21.62
10	Master Bathroom	20.67
11	Dressing	4.98
12	Bathroom	6.01

GROSS AREA  
177.88 m<sup>2</sup>

NET AREA  
154.57 m<sup>2</sup>











# BAGHYSHAQLAWA



# BAGHYSHAQLAWA

**BSG**  
BAGHYSHAQLAWA  
REAL ESTATE  
SINCE 2004