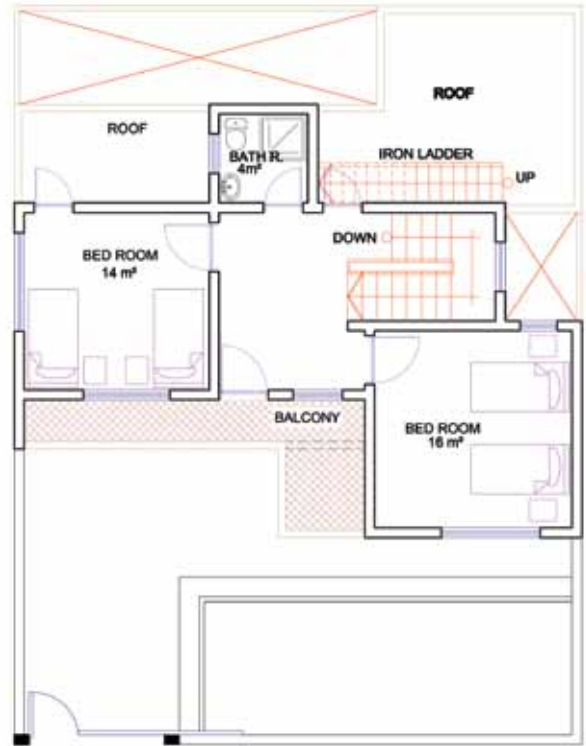


GROUND FLOOR PLAN



FIRST FLOOR PLAN

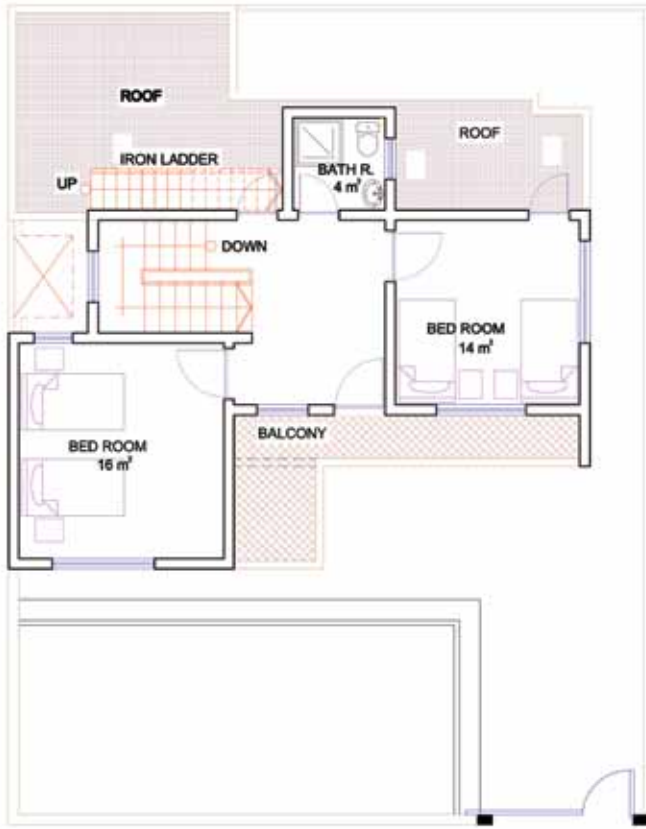
*The orientation of the unit sold depends on it's location*



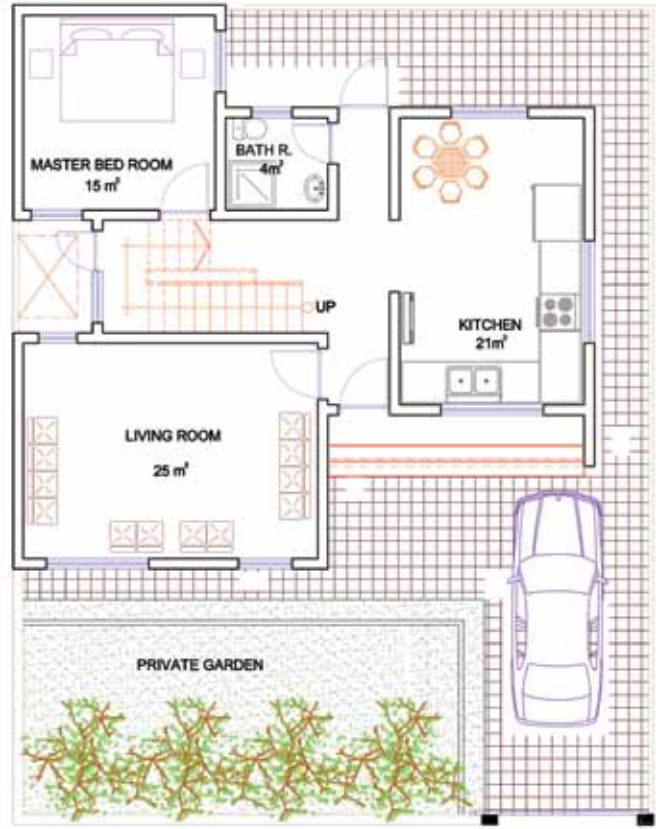
**The Atlantic**  
Villas & Apartments

Villa A Corner

# Villa A Corner - Mirror



FIRST FLOOR PLAN



GROUND FLOOR PLAN

*The orientation of the unit sold depends on it's location*

Two-Story Villa

Approximate Total Area: 150 m/sq

Land Area: 200 m/sq

Notes:

---

---

---

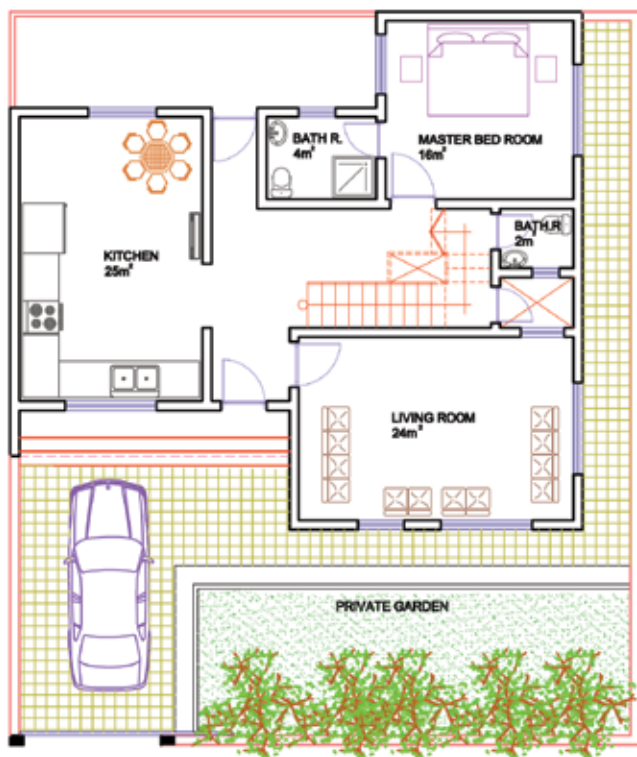
---

---

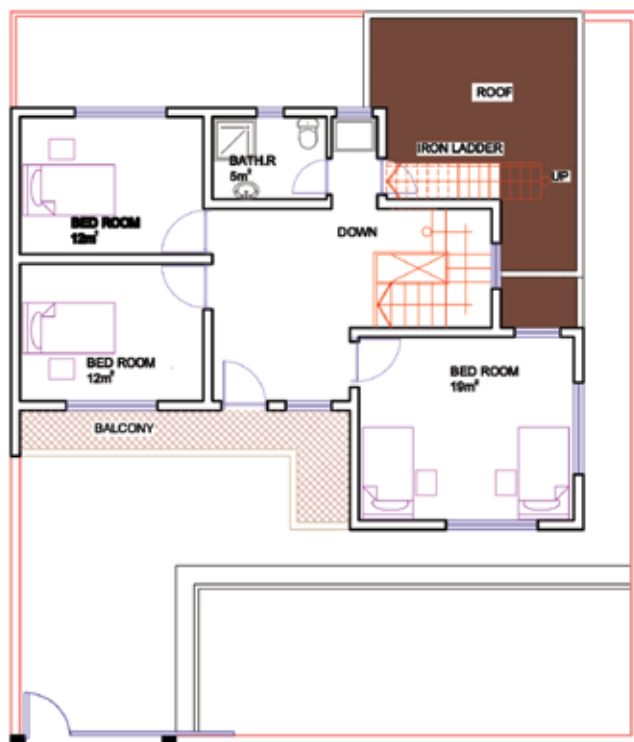


**The Atlantic**  
Villas & Apartments

Tel: 066-258-4107  
Mobile: 0750-199-5311  
[www.atlanticerbil.com](http://www.atlanticerbil.com)



**GROUND FLOOR PLAN**



**FIRST FLOOR PLAN**

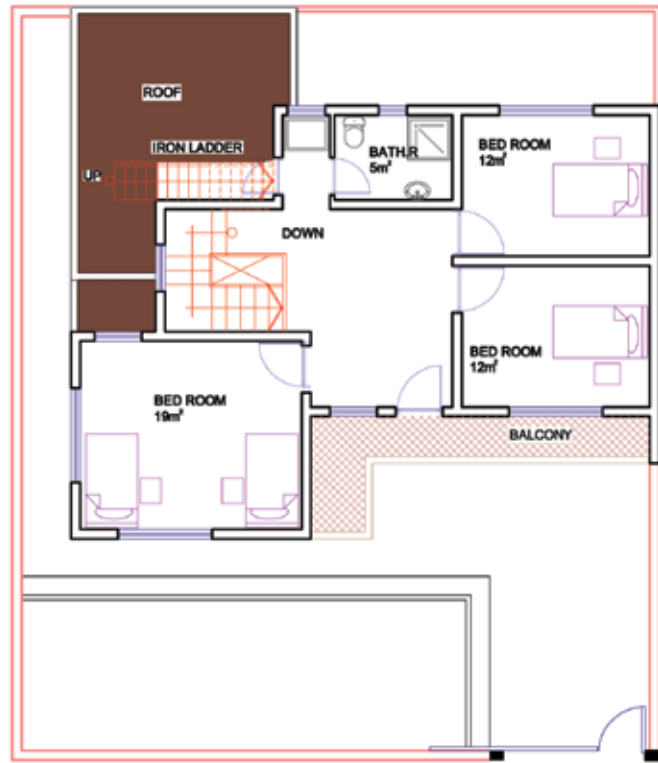
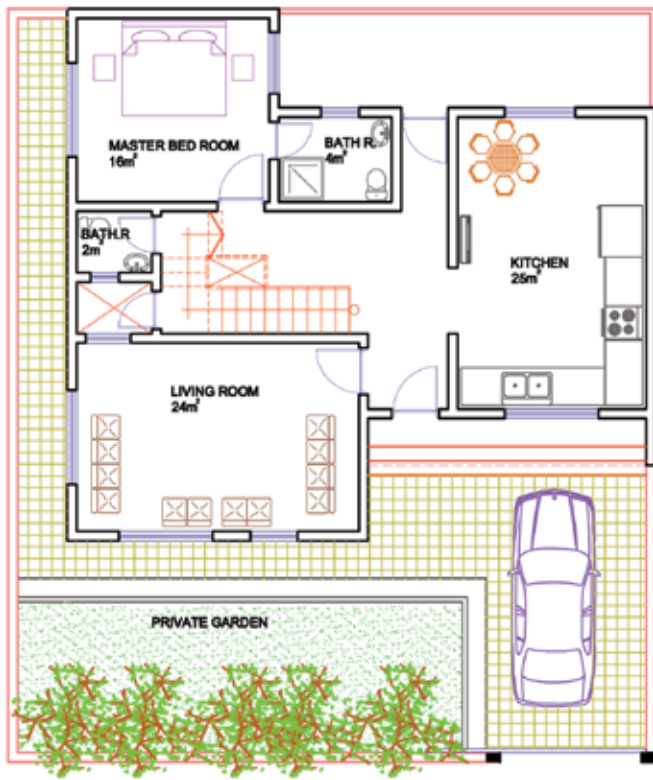
*The orientation of the unit sold depends on it's location*



**The Atlantic**  
Villas & Apartments

**Villa B Corner**

# Villa B Corner - Mirror



**GROUND FLOOR PLAN**

**FIRST FLOOR PLAN**

*The orientation of the unit sold depends on it's location*

Two-Story Villa

Approximate Total Area: 188 m/sq

Land Area: 200 m/sq

Notes:

---

---

---

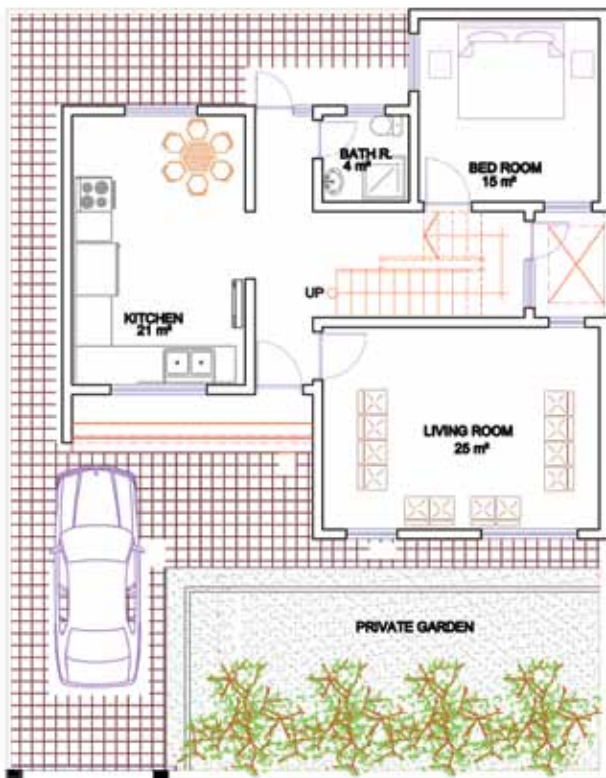
---

---

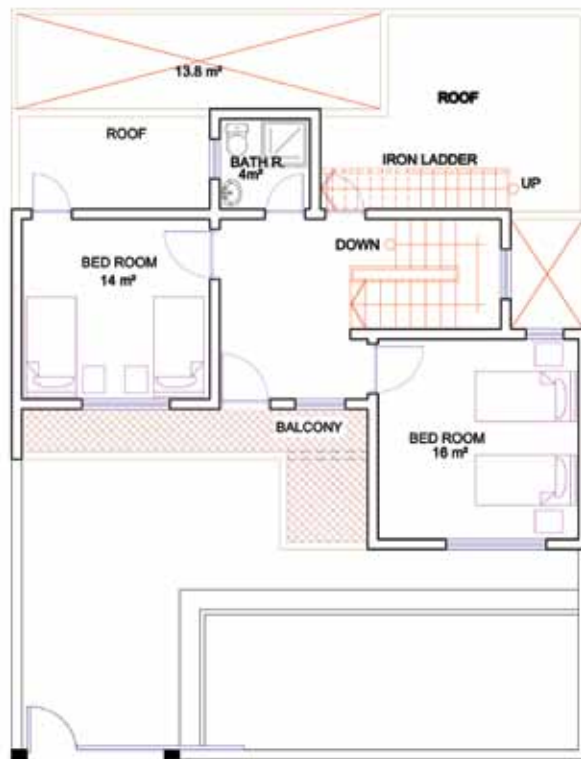


**The Atlantic**  
Villas & Apartments

Tel: 066-258-4107  
Mobile: 0750-199-5311  
[www.atlanticerbil.com](http://www.atlanticerbil.com)



GROUND FLOOR PLAN



FIRST FLOOR PLAN

*The orientation of the unit sold depends on it's location*

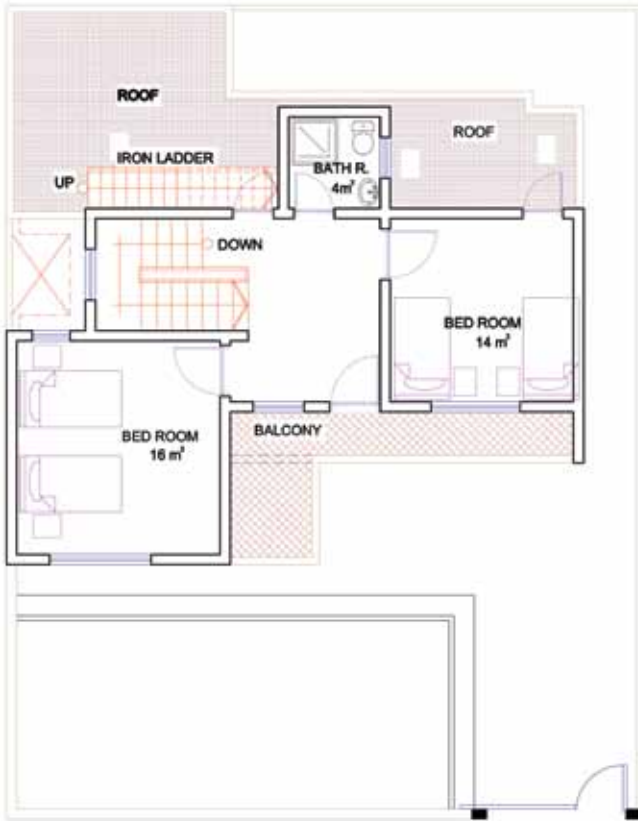


**The Atlantic**  
Villas & Apartments

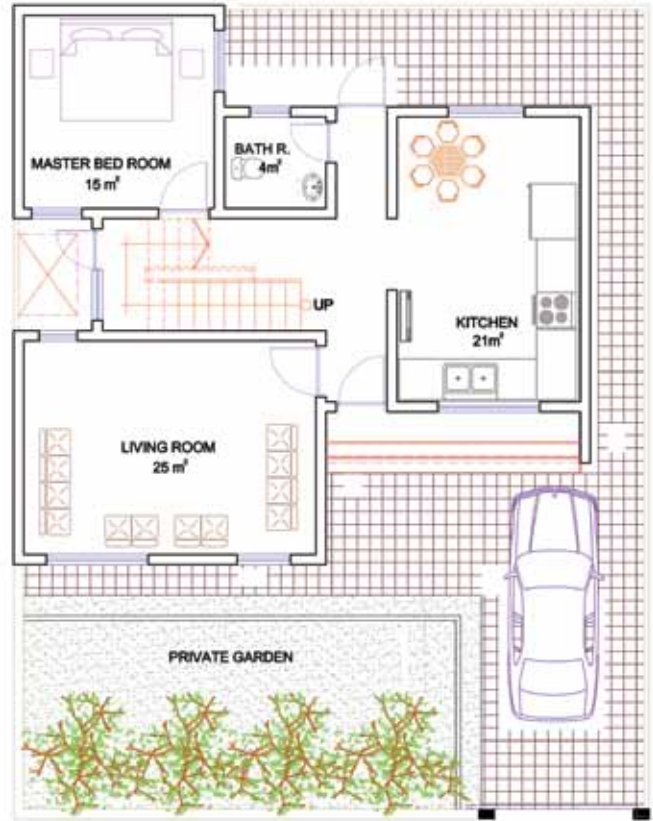
Villa A Middle



# Villa A Middle - Mirror



FIRST FLOOR PLAN



GROUND FLOOR PLAN

*The orientation of the unit sold depends on it's location*

**Two-Story Villa**

**Approximate Total Area: 150 m/sq**

**Land Area: 200 m/sq**

Notes:

---

---

---

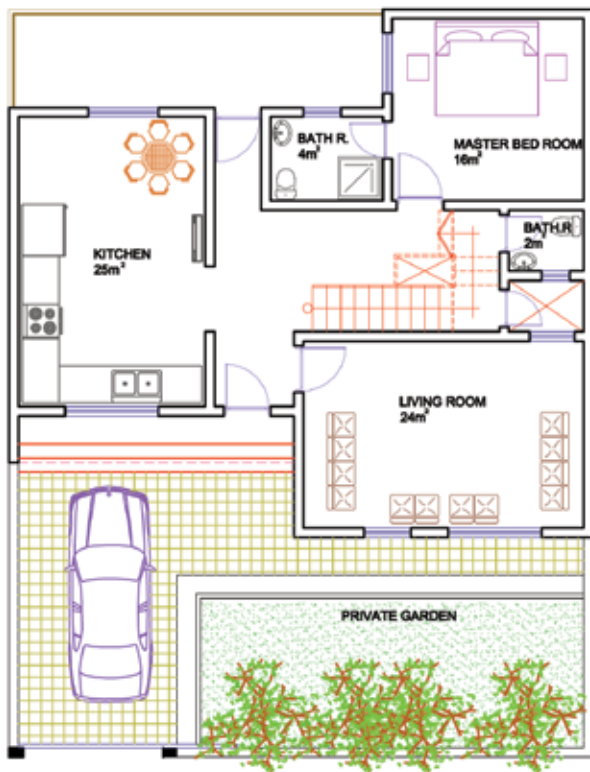
---

---

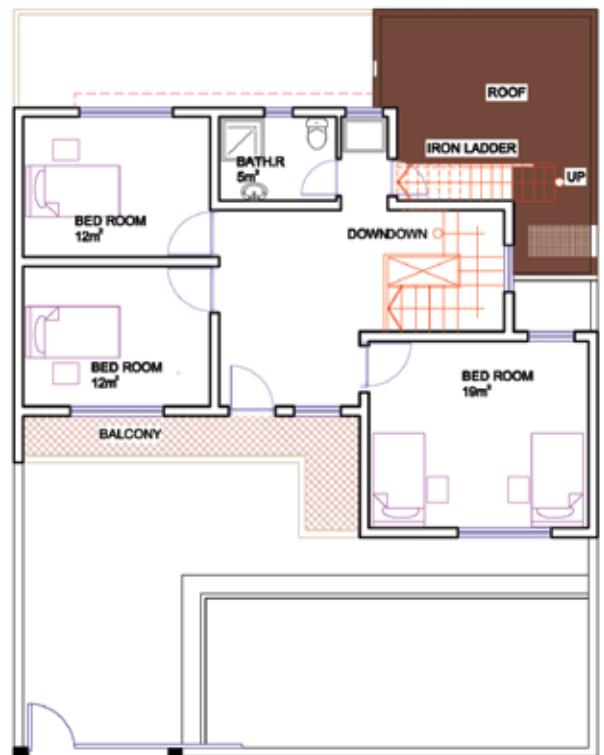


**The Atlantic**  
Villas & Apartments

Tel: 066-258-4107  
Mobile: 0750-199-5311  
[www.atlanticerbil.com](http://www.atlanticerbil.com)



**GROUND FLOOR PLAN**



**FIRST FLOOR PLAN**

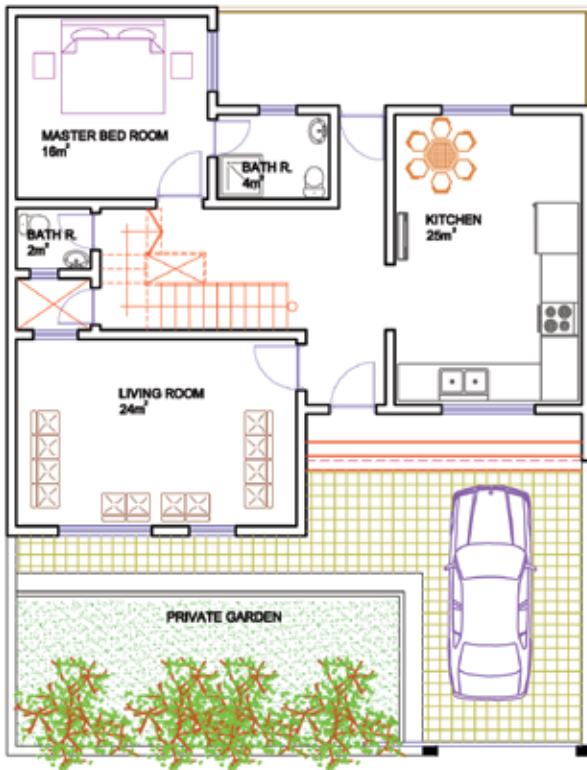
*The orientation of the unit sold depends on it's location*



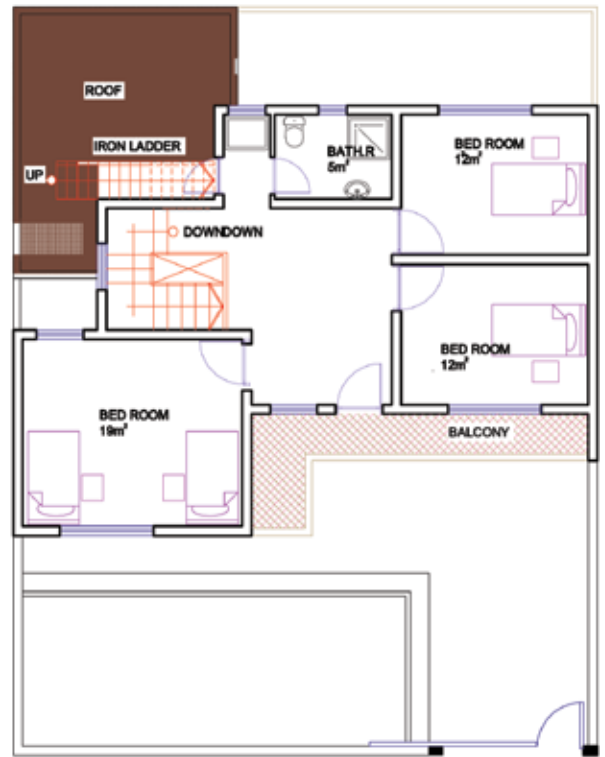
**The Atlantic**  
Villas & Apartments

**Villa B Middle**

# Villa B Middle - Mirror



**GROUND FLOOR PLAN**



**FIRST FLOOR PLAN**

*The orientation of the unit sold depends on it's location*

Two-Story Villa

Approximate Total Area: 188 m/sq

Land Area: 200 m/sq

Notes:

---

---

---

---

---



**The Atlantic**  
Villas & Apartments

Tel: 066-258-4107  
Mobile: 0750-199-5311  
[www.atlanticerbil.com](http://www.atlanticerbil.com)