

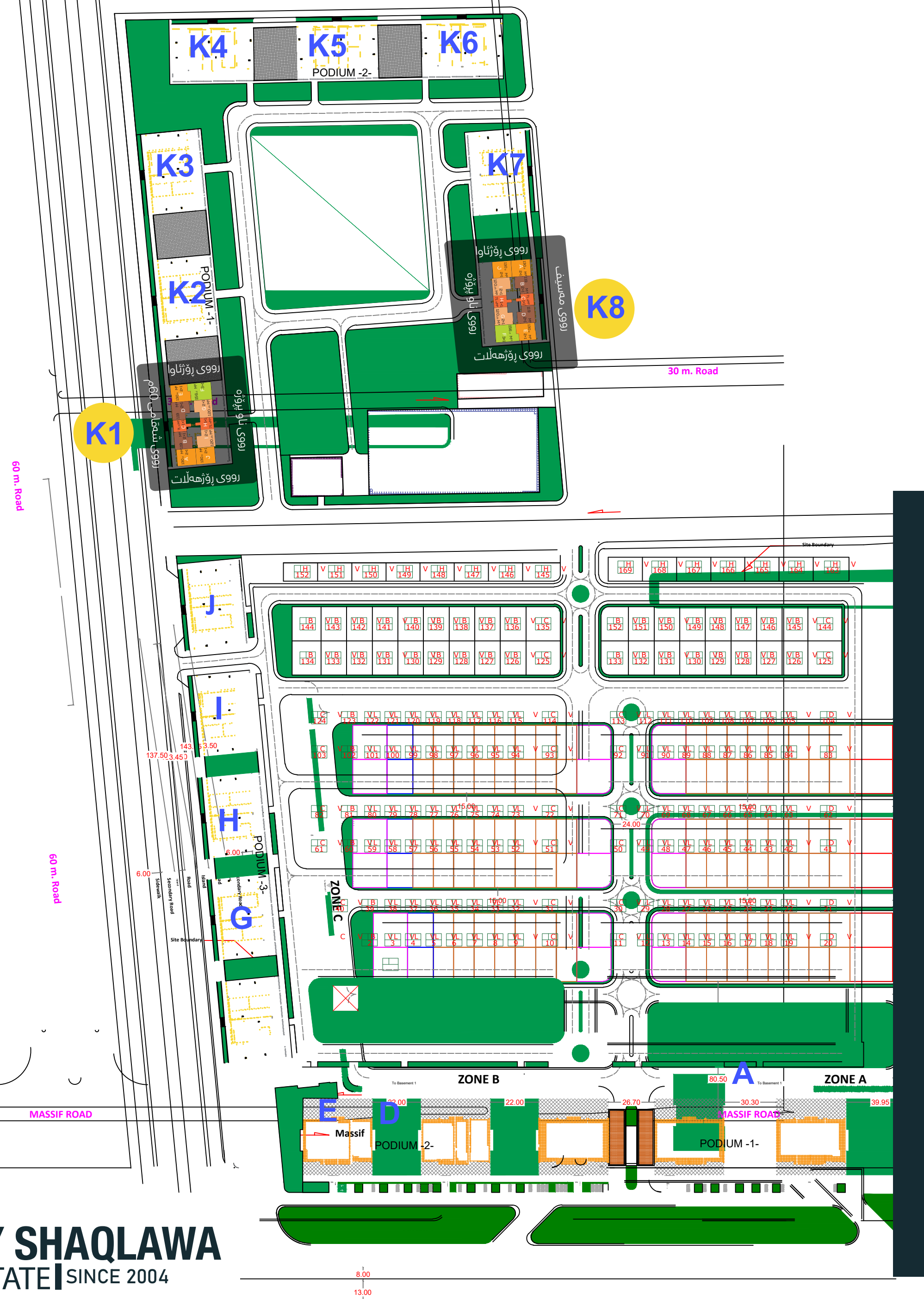
Qaiwan Mirador



پروژەى

قەيوان ميراډور
بالاخانى

K1 K8





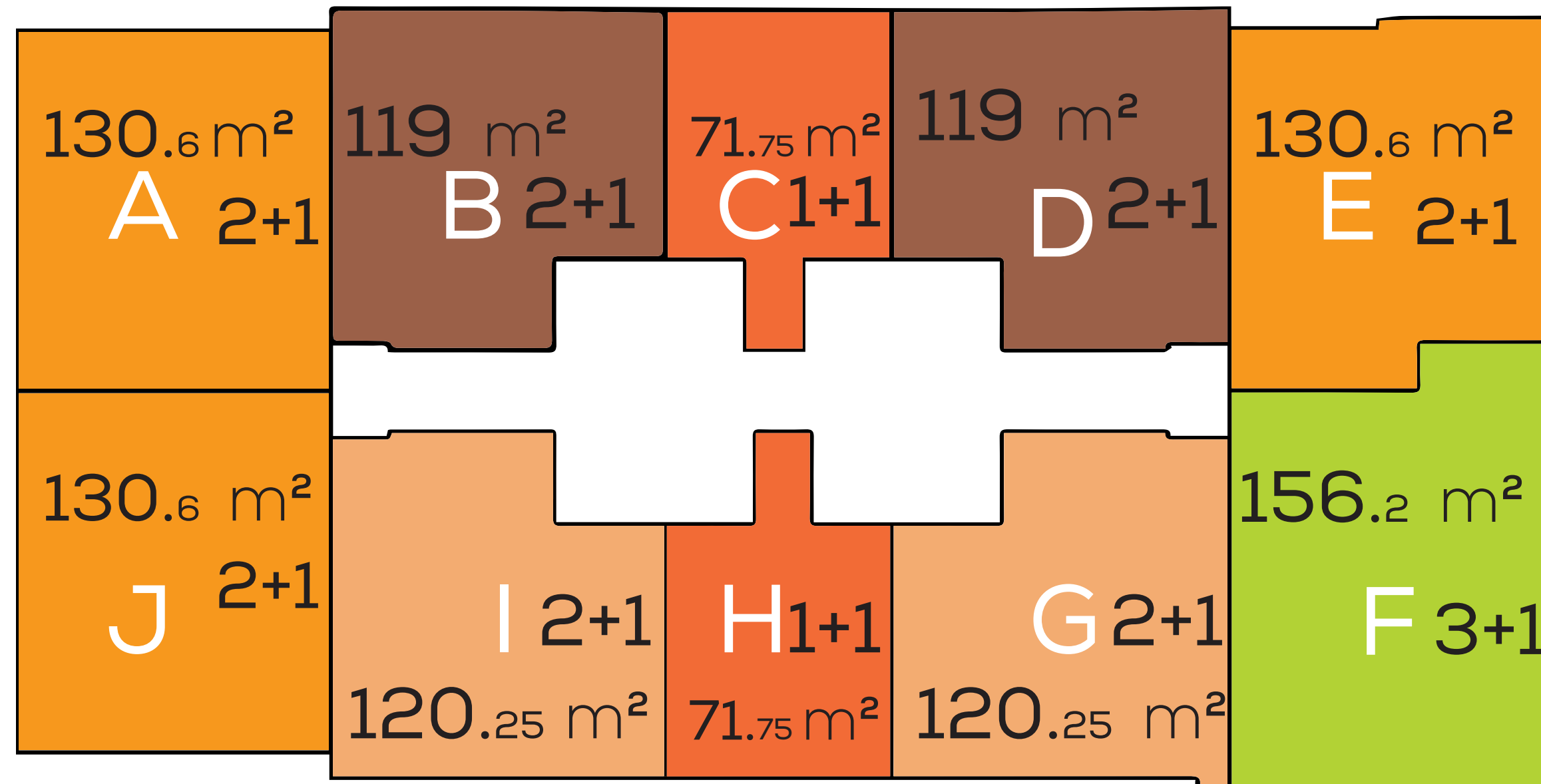
رووبهەر جوړ

2+1	130.6	M ²	● A J E
2+1	119	M ²	● B D
1+1	71.75	M ²	● C H
	73	M ²	
2+1	120.25	M ²	● I G
3+1	156.2	M ²	● F

K8

30 m. Road

Site Boundary



رووبەر جور

جور	رووبەر	جور
2+1	130.6 M ²	●
2+1	119 M ²	●
1+1	71.75 M ²	●
2+1	73 M ²	●
2+1	120.25 M ²	●
3+1	156.2 M ²	●

APARTMENT

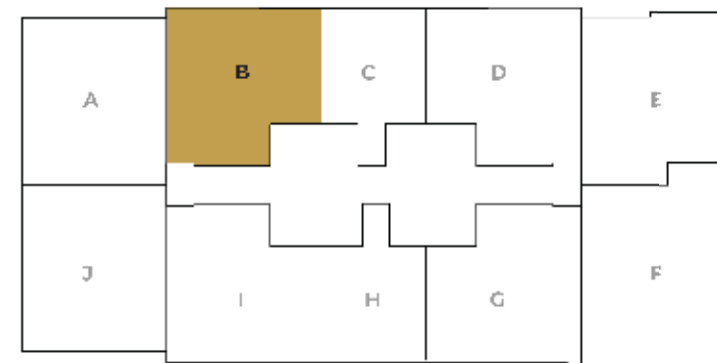
2 Bedrooms

- Net Area = 101.7 m²
- Gross Area = 119 m²

B



Masif Main Road



Project

APARTMENT

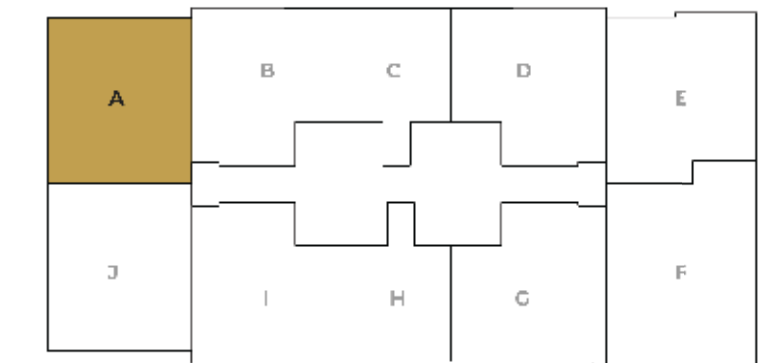
2 Bedrooms

- Net Area = 111.1 m²
- Gross Area = 130 m²

A



Masif Main Road



Project

NO.	Spaces	Area
01	Entrance	4 m ²
02	Living - Dining	28 m ²
03	Kitchen	10 m ²
04	Master Bedroom	21 m ²
05	Bedroom 2	16 m ²
06	Bath	3 m ²
07	Balcony	8 m ²
08	Corridor	7.5 m ²

NO.	Spaces	Area
01	Entrance	3 m ²
02	Living - Dining	27 m ²
03	Kitchen	10 m ²
04	Master Bedroom	13 m ²
05	Bedroom 2	12 m ²
06	Bath	8 m ²
07	Balcony	8 m ²
08	Corridor	5 m ²

1st - 22nd FLOOR PLAN

1st - 22nd FLOOR PLAN

APARTMENT

2 Bedrooms

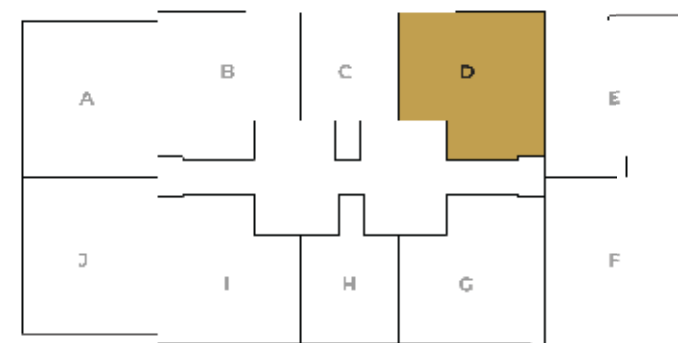
D

- Net Area = 101.7 m²
- Gross Area = 119 m²

NO.	Spaces	Area
01	Entrance	3 m ²
02	Living - Dining	27 m ²
03	Kitchen	10 m ²
04	Master Bedroom	13 m ²
05	Bedroom 2	13 m ²
06	Bath	7 m ²
07	Balcony	9 m ²
08	Corridor	5 m ²



Masif Main Road



Project

23

1st - 22nd FLOOR PLAN

APARTMENT

1 Bedrooms

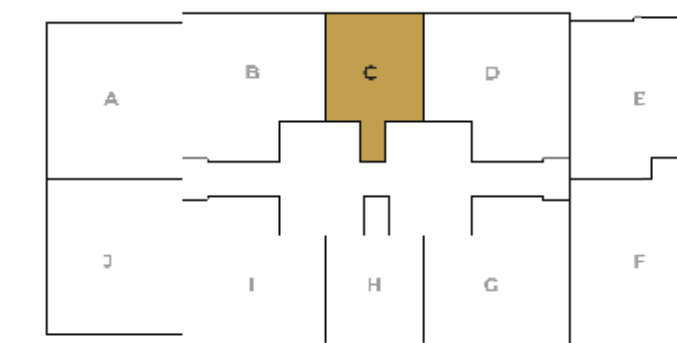
C

- Net Area = 61.32 m²
- Gross Area = 71.75 m²

NO.	Spaces	Area
01	Entrance	5 m ²
02	Living-Dining-Kitchen	29 m ²
03	Bedroom	12 m ²
04	Bath	3 m ²
05	Laundry	1 m ²
06	Balcony	3 m ²



Masif Main Road



Project

22

1st - 22nd FLOOR PLAN

APARTMENT

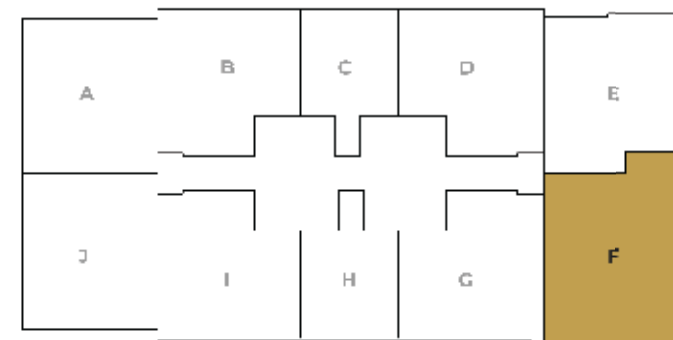
3 Bedrooms

- Net Area = 133.5 m²
- Gross Area = 156.2 m²

NO.	Spaces	Area
01	Entrance	3 m ²
02	Living - Dining	33 m ²
03	Kitchen	13 m ²
04	Master Bedroom	21 m ²
05	Bedroom 2	12 m ²
06	Bedroom 3	12 m ²
07	Bathroom	5 m ²
08	Balcony	7 m ²
09	Corridor	12 m ²



Masif Main Road



Project

25

1st - 22nd FLOOR PLAN

APARTMENT

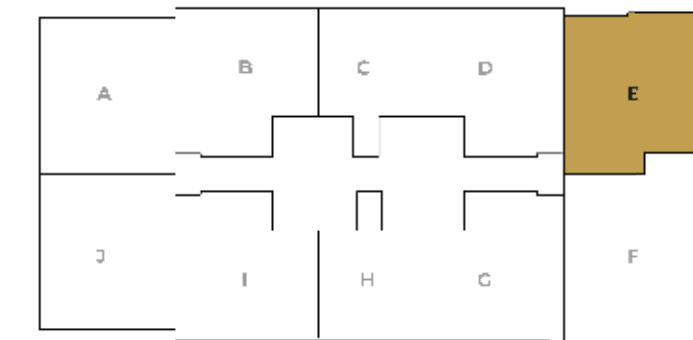
2 Bedrooms

- Net Area = 111.62 m²
- Gross Area = 130.6 m²

NO.	Spaces	Area
01	Entrance	4 m ²
02	Living - Dining	31 m ²
03	Kitchen	11 m ²
04	Master Bedroom	21 m ²
05	Bedroom 2	12 m ²
06	Bath	4 m ²
07	Balcony	7 m ²
08	Corridor	10 m ²



Masif Main Road



Project

24

1st - 22nd FLOOR PLAN

APARTMENT

1 Bedrooms

- Net Area = 62.27 m²
- Gross Area = 73 m²

NO.	Spaces	Area
01	Entrance	5 m ²
02	Living-Dining-Kitchen	29 m ²
03	Bedroom	12 m ²
04	Bathroom	3 m ²
05	Laundry	1 m ²
06	Balcony	3 m ²



27

1st - 22nd
FLOOR PLAN

APARTMENT

2 Bedrooms

- Net Area = 102.78 m²
- Gross Area = 120.25 m²

NO.	Spaces	Area
01	Entrance	3 m ²
02	Living - Dining	27 m ²
03	Kitchen	10 m ²
04	Master Bedroom	13 m ²
05	Bedroom 2	13 m ²
06	Bathroom	7 m ²
07	Balcony	9 m ²
08	Corridor	5 m ²



26

1st - 22nd
FLOOR PLAN

APARTMENT

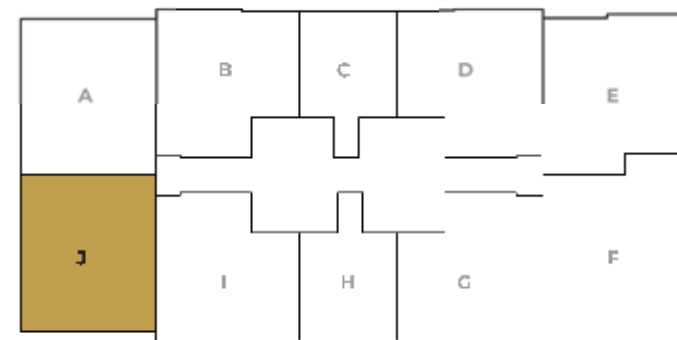
2 Bedrooms

- Net Area = 111.1 m²
- Gross Area = 130 m²

NO.	Spaces	Area
01	Entrance	3 m ²
02	Living - Dining	28 m ²
03	Kitchen	10 m ²
04	Master Bedroom	21 m ²
05	Bedroom 2	16 m ²
06	Bathroom	3 m ²
07	Balcony	8 m ²
08	Corridor	6 m ²



Masif Main Road



Project

29

1st - 22nd
FLOOR PLAN

J

APARTMENT

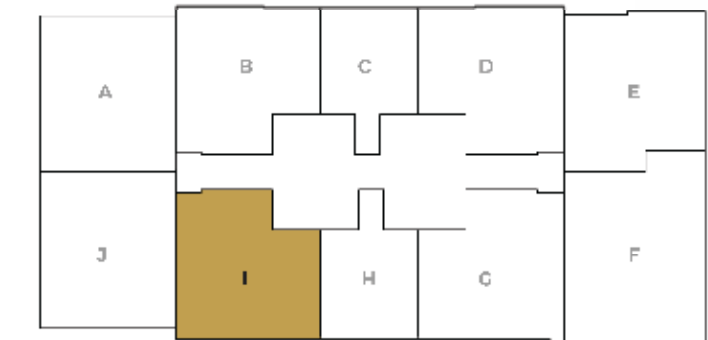
2 Bedrooms

- Net Area = 102.78 m²
- Gross Area = 120.25 m²

NO.	Spaces	Area
01	Entrance	3 m ²
02	Living - Dining	27 m ²
03	Kitchen	10 m ²
04	Master Bedroom	13 m ²
05	Bedroom 2	12 m ²
06	Bathroom	8 m ²
07	Balcony	8 m ²
08	Corridor	5 m ²



Masif Main Road



Project

28

1st - 22nd
FLOOR PLAN

Tower G Typical Floor Apartments

24 مانگی کارکردن

قات	ژماره	رووبەر	نرخ	کۆی نرخ	له گهۆ گرپهست	له گهۆ کلپل	قپستی مانگانه (24)	عموله	مانگانه	سالانه
Floors	D-02-01	130	\$ 800	\$ 104,000	\$ 26,000	\$ 15,000	\$ 600	\$ 30	105	9
	D-02-02	120.25	\$ 800	\$ 96,200	\$ 24,000	\$ 15,000	\$ 600	\$ 30	95	8
	D-02-03	73	\$ 800	\$ 58,400	\$ 14,500	\$ 10,000	\$ 500	\$ 30	68	6
	D-02-04	120.25	\$ 800	\$ 96,200	\$ 24,000	\$ 15,000	\$ 600	\$ 30	95	8
	D-02-05	156.2	\$ 800	\$ 124,960	\$ 30,000	\$ 20,000	\$ 700	\$ 30	107	9
	D-02-06	130.6	\$ 800	\$ 104,480	\$ 26,000	\$ 15,000	\$ 600	\$ 30	106	9
	D-02-07	119	\$ 800	\$ 95,200	\$ 23,000	\$ 15,000	\$ 600	\$ 30	95	8
	D-02-08	71.75	\$ 800	\$ 57,400	\$ 14,500	\$ 10,000	\$ 500	\$ 30	66	6
	D-02-09	119	\$ 800	\$ 95,200	\$ 23,000	\$ 15,000	\$ 600	\$ 30	95	8
	D-02-10	130	\$ 800	\$ 104,000	\$ 26,000	\$ 15,000	\$ 600	\$ 30	105	9

42 مانگی کارکردن

Tower K1 Typical Floor Apartments

قات	ژماره	رووبهر	نرخ	کۆی نرخ	له گهۆ گرپهست	له گهۆ کلیل	قیستی مانگانه (24)	عموله	مانگانه	سالانه
Floors	D-02-01	130	\$ 800	\$ 104,000	\$ 15,500	\$ 15,500	\$ 500	\$ 20	146	12
	D-02-02	120.25	\$ 800	\$ 96,200	\$ 14,500	\$ 14,500	\$ 500	\$ 20	134	11
	D-02-03	73	\$ 800	\$ 58,400	\$ 9,000	\$ 9,000	\$ 400	\$ 20	101	8
	D-02-04	120.25	\$ 800	\$ 96,200	\$ 14,500	\$ 14,500	\$ 500	\$ 20	134	11
	D-02-05	156.2	\$ 800	\$ 124,960	\$ 18,500	\$ 18,500	\$ 600	\$ 20	147	12
	D-02-06	130.6	\$ 800	\$ 104,480	\$ 15,500	\$ 15,500	\$ 500	\$ 20	147	12
	D-02-07	119	\$ 800	\$ 95,200	\$ 14,500	\$ 14,500	\$ 500	\$ 20	132	11
	D-02-08	71.75	\$ 800	\$ 57,400	\$ 9,000	\$ 9,000	\$ 400	\$ 20	99	8
	D-02-09	119	\$ 800	\$ 95,200	\$ 14,500	\$ 14,500	\$ 500	\$ 20	132	11
	D-02-10	130	\$ 800	\$ 104,000	\$ 15,500	\$ 15,500	\$ 500	\$ 20	146	12

Tower K8 Typical Floor Apartments

60 مانگی کارکردن

قات	ژماره	رووبهر	نرخ	کۆی نرخ	له گهۆ گرێبه ست	له گهۆ کلیل	قیستی مانگانه (24)	عموله	مانگانه	سالانه
Floors	D-02-01	130	\$ 800	\$ 104,000	\$ 13,000	\$ 13,000	\$ 400	\$ 15	195	16
	D-02-02	120.25	\$ 800	\$ 96,200	\$ 12,000	\$ 12,000	\$ 400	\$ 15	181	15
	D-02-03	73	\$ 800	\$ 58,400	\$ 7,500	\$ 7,500	\$ 300	\$ 15	145	12
	D-02-04	120.25	\$ 800	\$ 96,200	\$ 12,000	\$ 12,000	\$ 400	\$ 15	181	15
	D-02-05	156.2	\$ 800	\$ 124,960	\$ 15,500	\$ 15,500	\$ 500	\$ 15	188	16
	D-02-06	130.6	\$ 800	\$ 104,480	\$ 13,000	\$ 13,000	\$ 400	\$ 15	196	16
	D-02-07	119	\$ 800	\$ 95,200	\$ 12,000	\$ 12,000	\$ 400	\$ 15	178	15
	D-02-08	71.75	\$ 800	\$ 57,400	\$ 7,500	\$ 7,500	\$ 300	\$ 15	141	12
	D-02-09	119	\$ 800	\$ 95,200	\$ 12,500	\$ 12,500	\$ 400	\$ 15	176	15
	D-02-10	130	\$ 800	\$ 104,000	\$ 13,500	\$ 13,500	\$ 400	\$ 15	193	16